



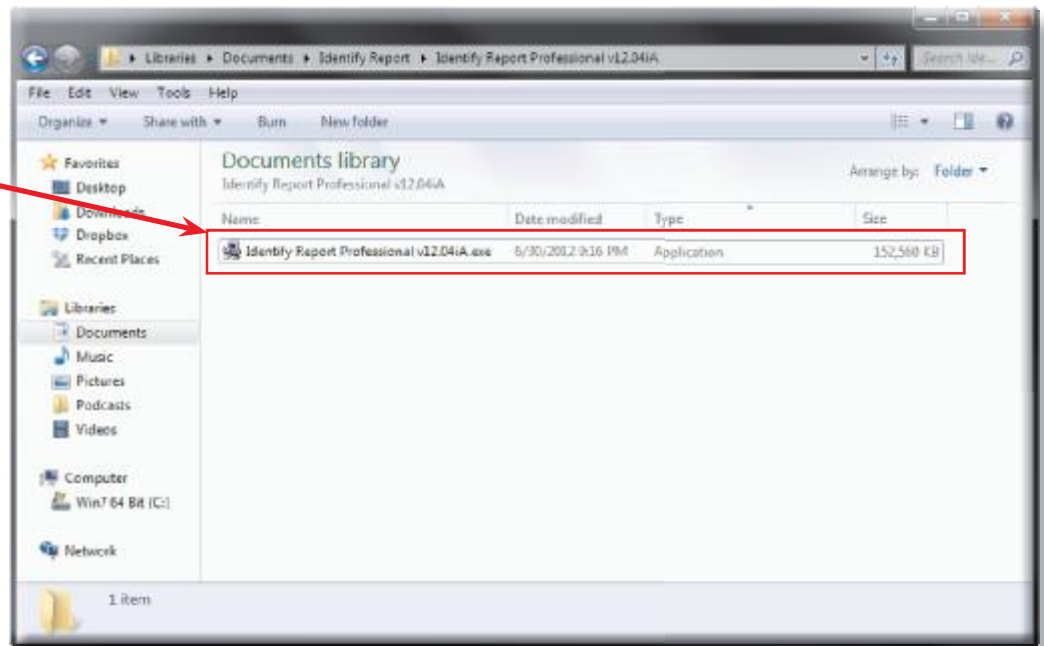
This document is to show you how to install

Identify & Report Professional Australia

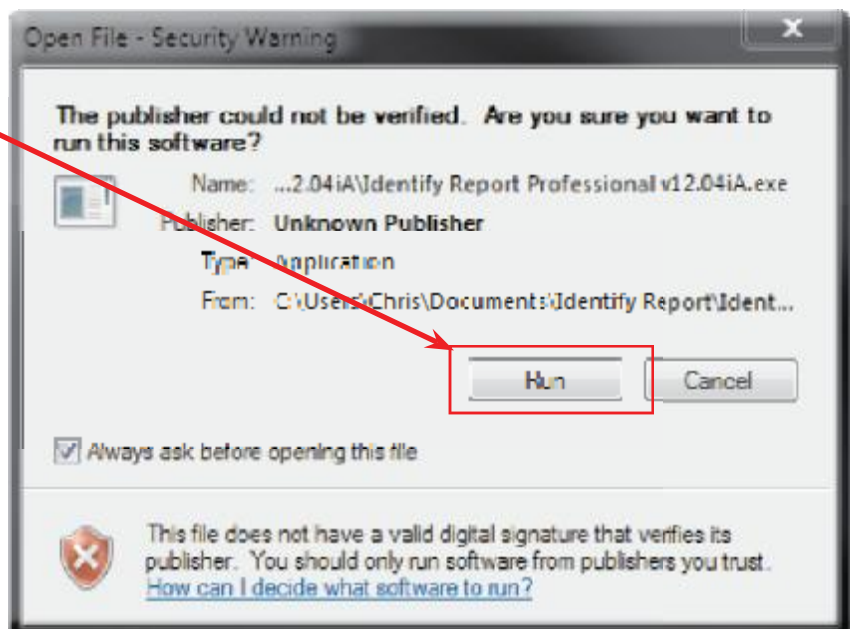


After downloading “Identify & Report Professional Australia” remember where you downloaded it.

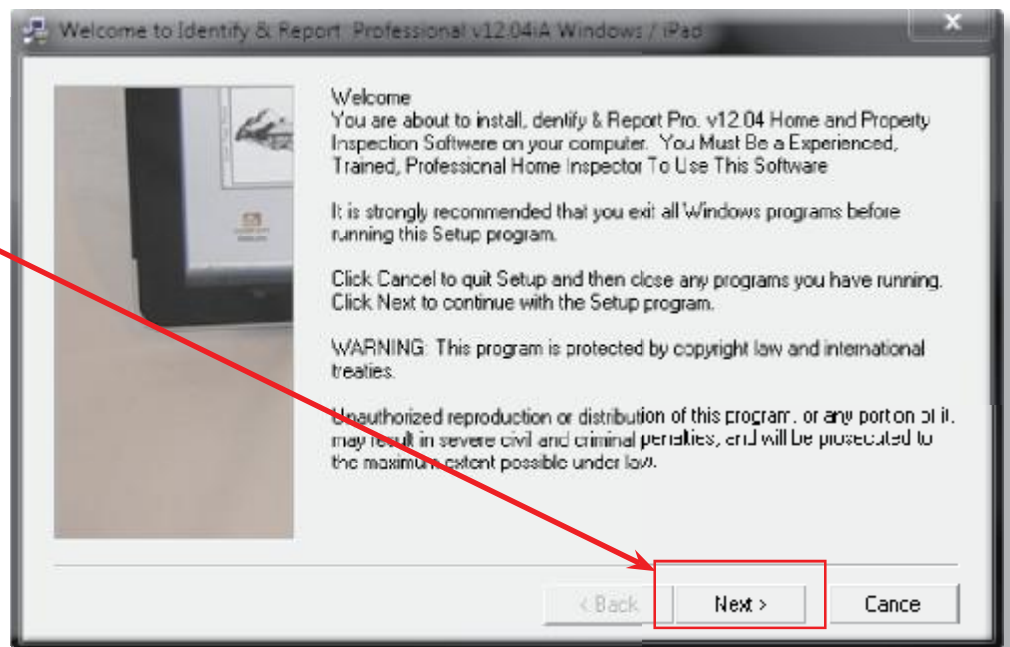
Open Folder where you have downloaded “Identify & Report Professional Australia” and double click file.



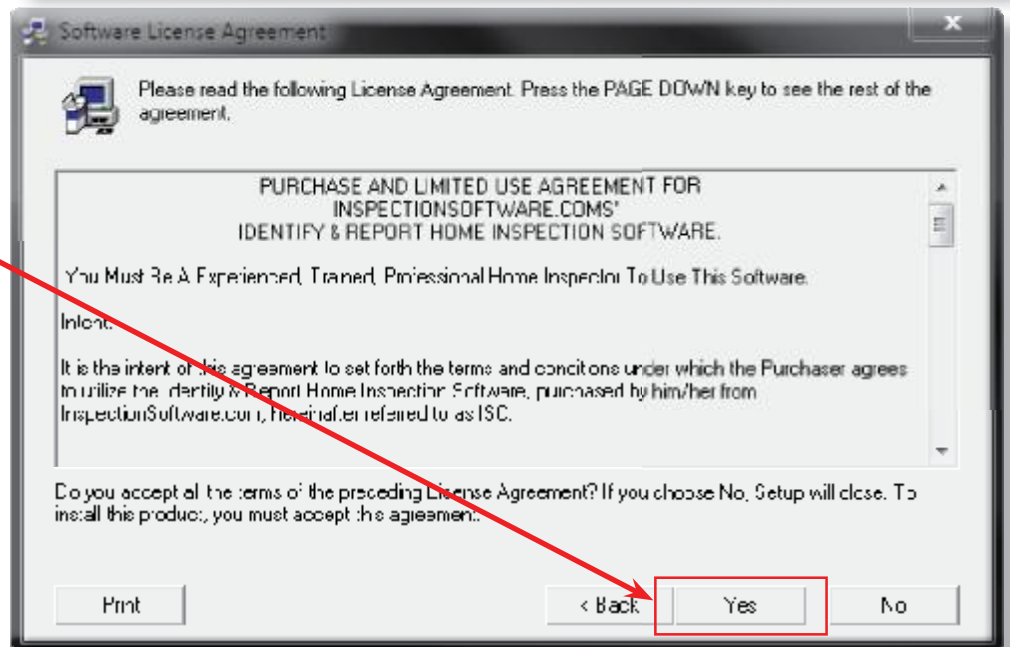
Security Warning click on Run



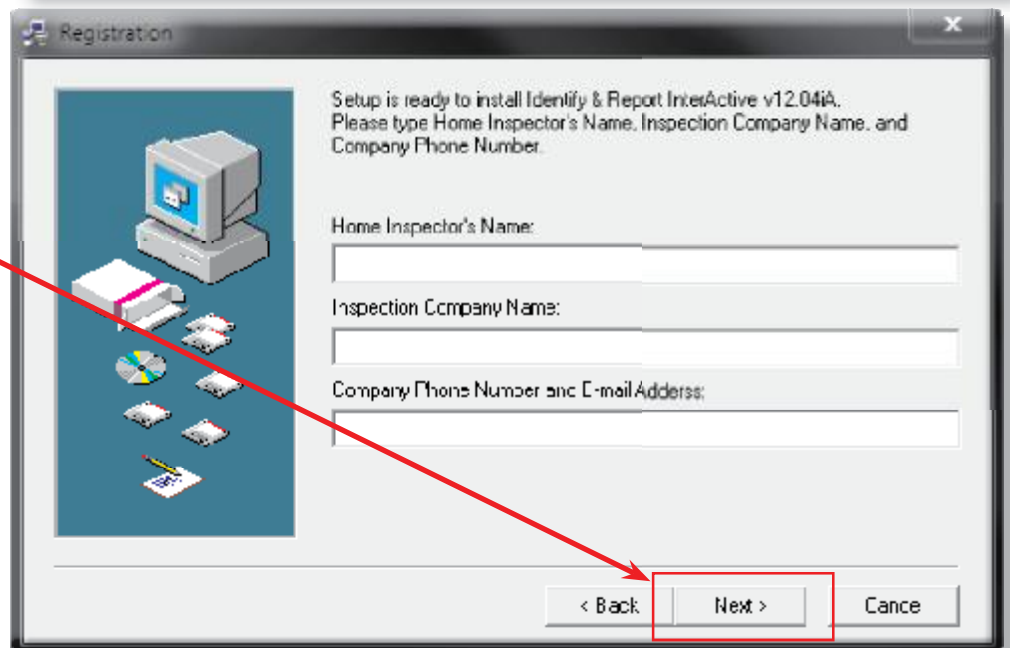
Click Next



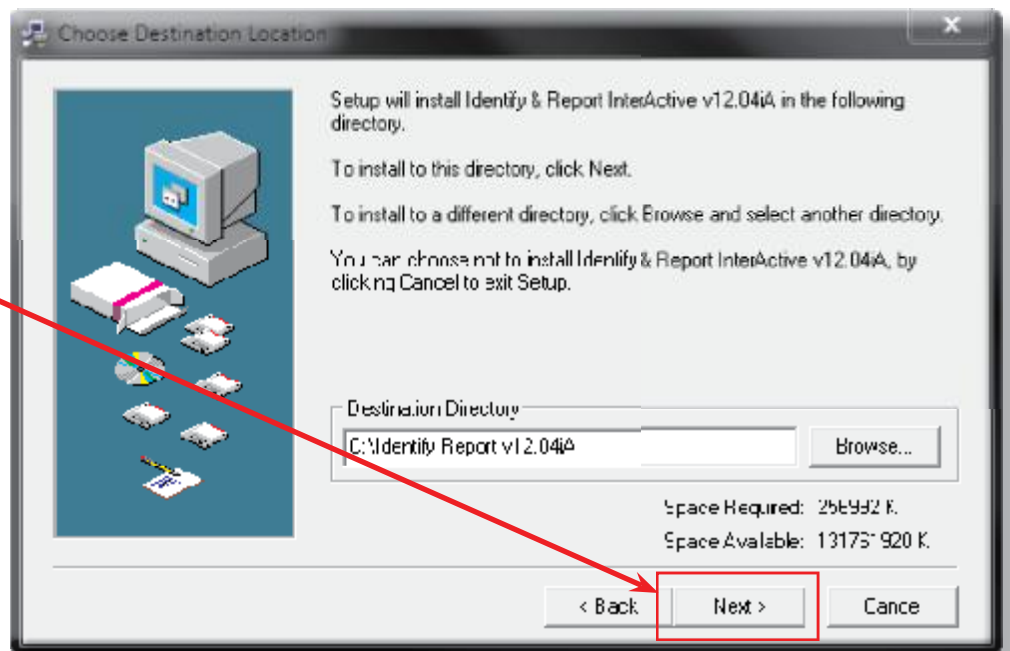
**Software License Agreement
Click Yes**



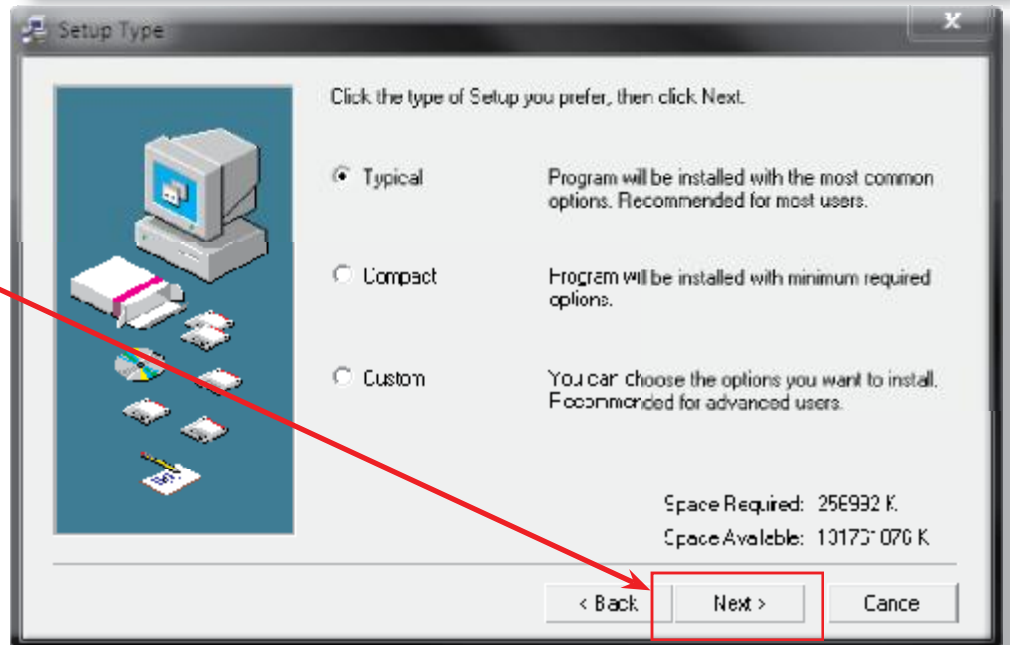
**Registration form Fill in
Click next**



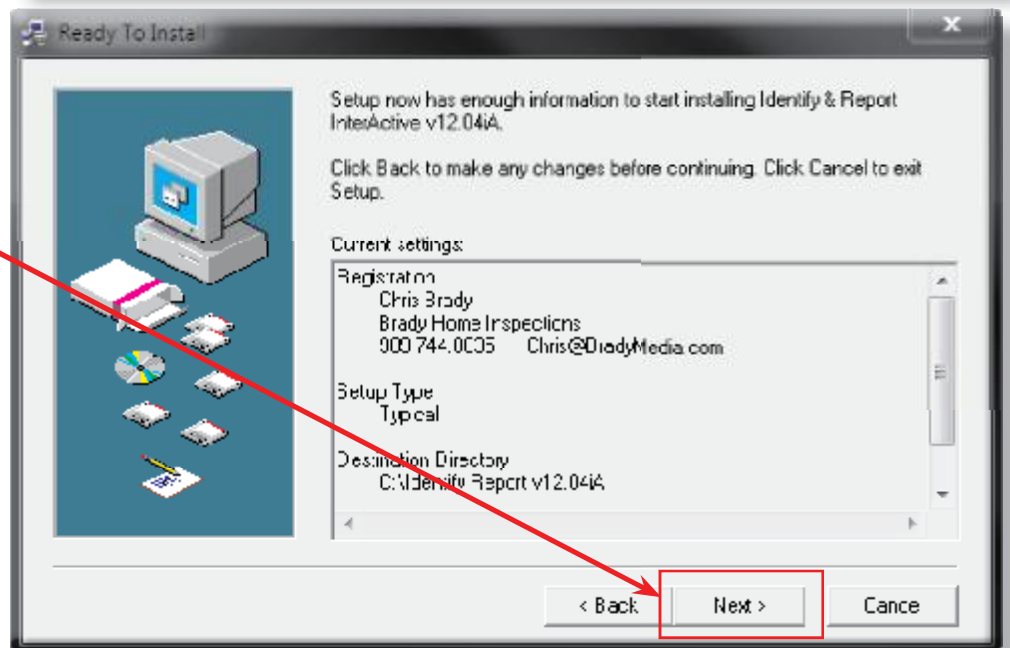
**Destination Directory do not change.
Click next**



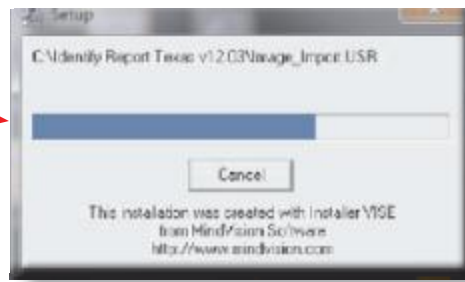
**Destination Directory do not change.
Click next**



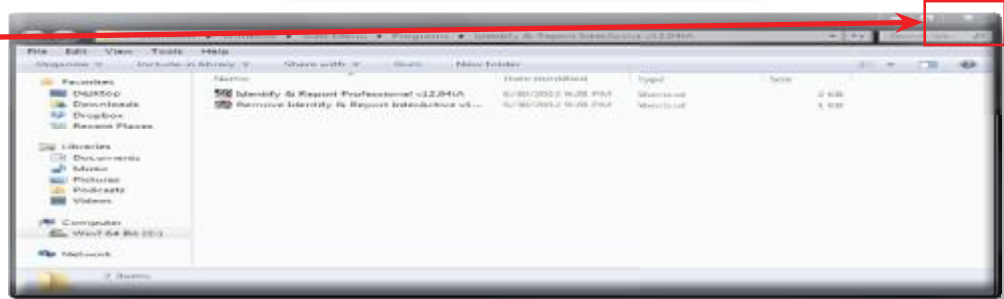
**Ready to install.
Click next**



**Setup Progress Window.
Do nothing**

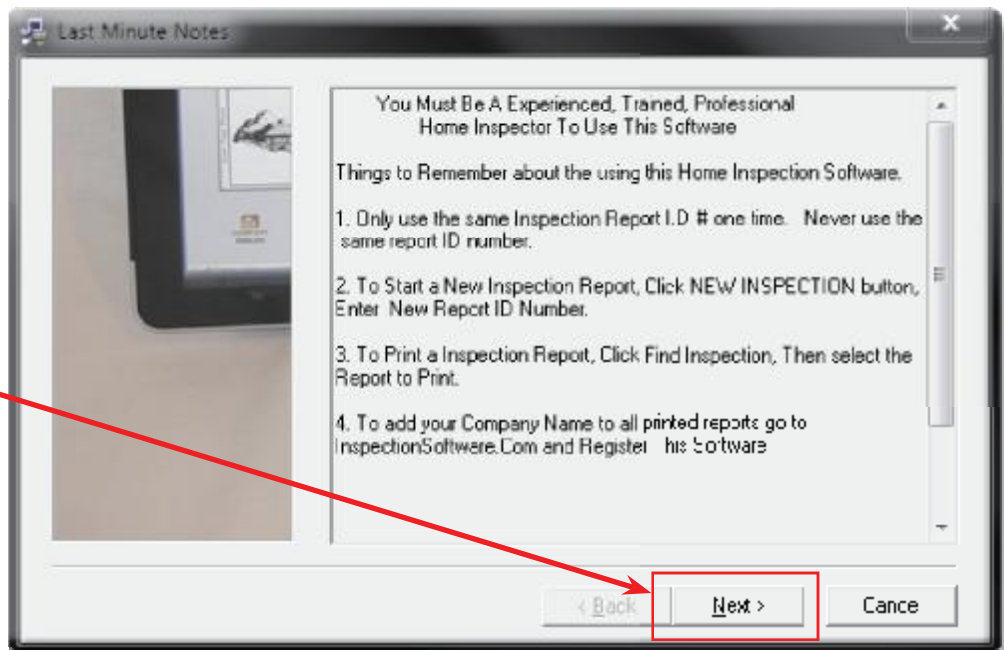


Close this window

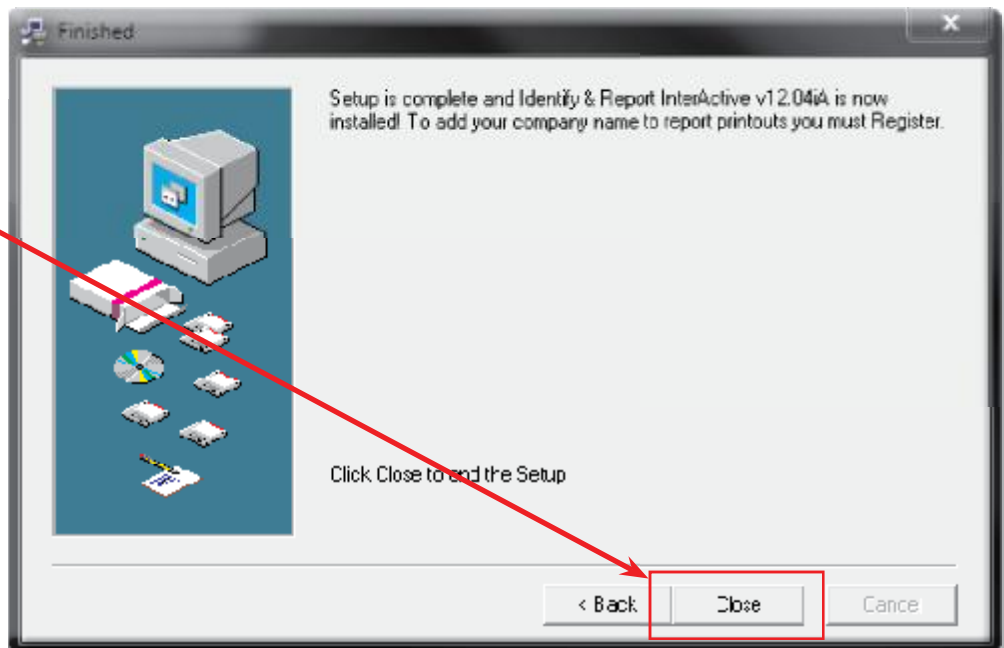


**Last Minute Notes:
Please read
“Things to Remember about the
using this Home Inspection
Software”**

Then Next



Identify and Report setup complete. Click close

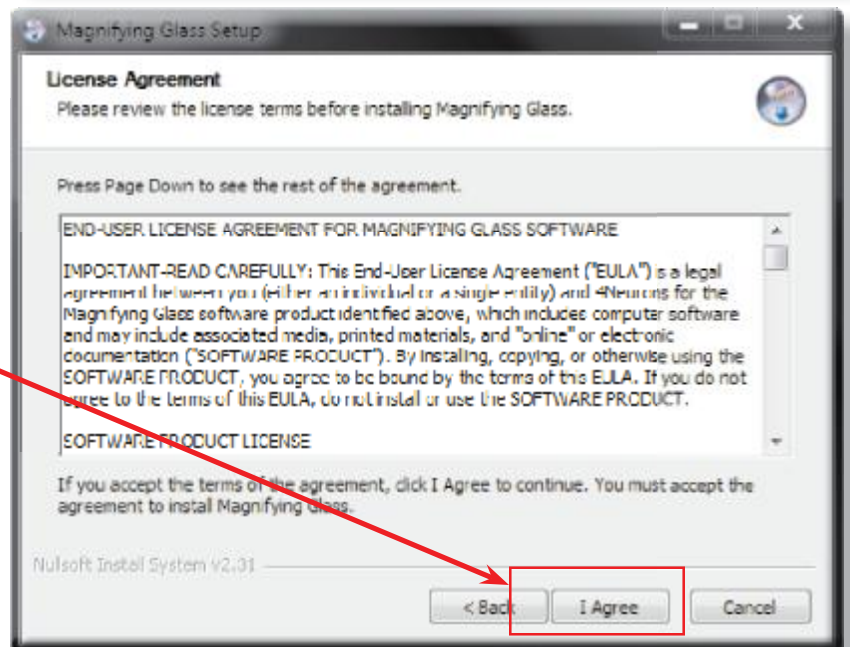


Click Next

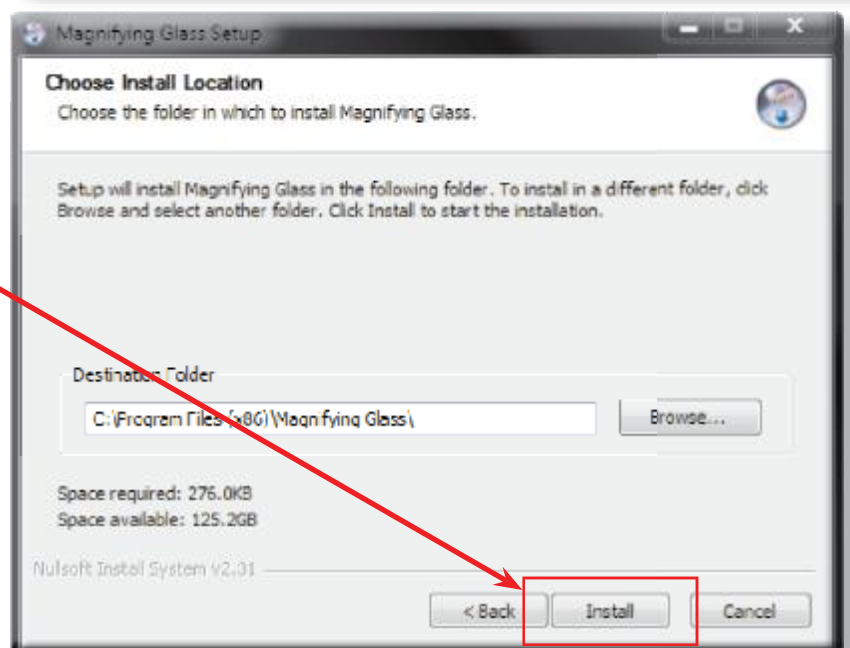


Magnifying Glass License Agreement

Click I Agree



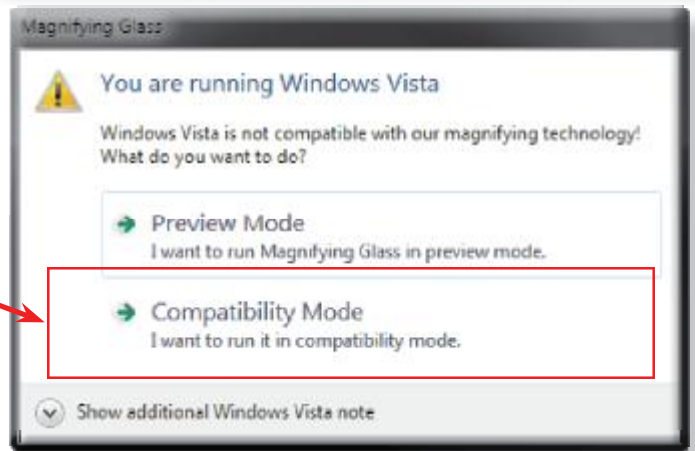
Destination Directory do not change.
Click next



**Magnifying Glass Setup Completed.
Click finish**

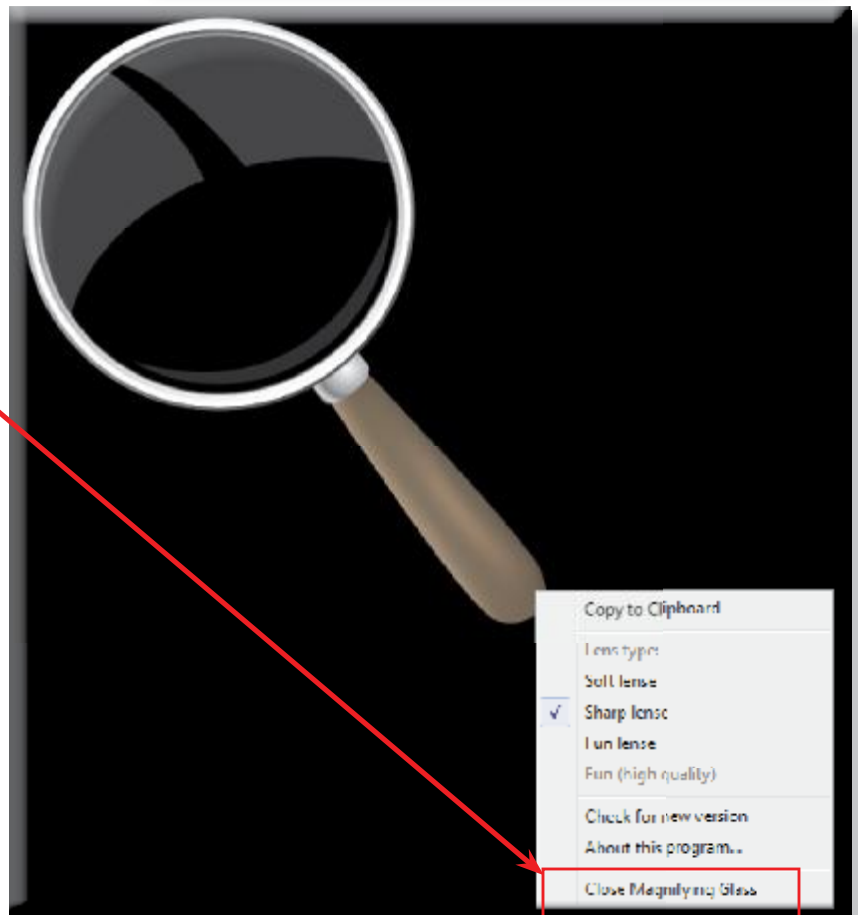


**If you are running
Windows 7 click on
Compatibility Mode.**

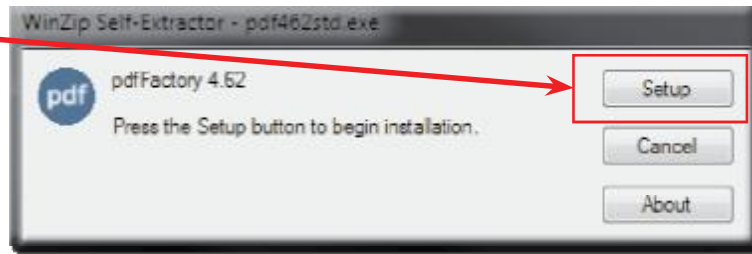


**If you are running
Windows XP this
window will not
appear.**

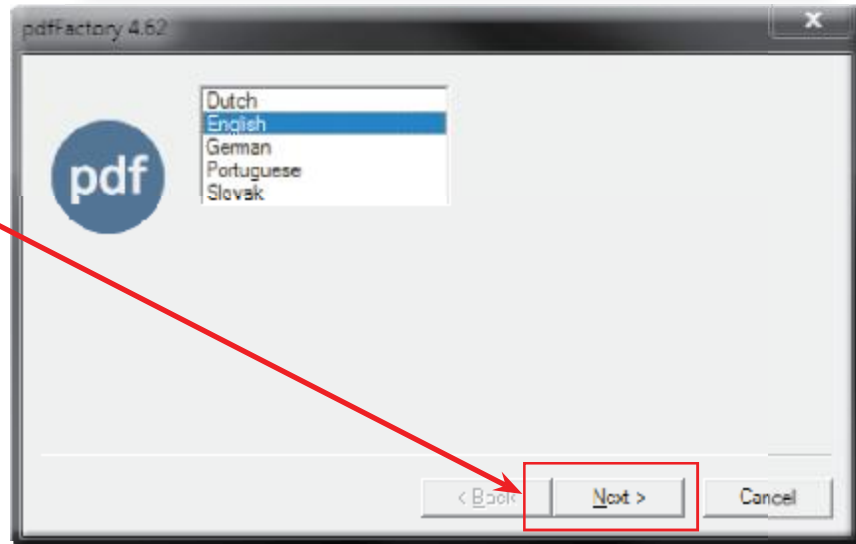
**The Magnifying Glass will open.
Right click on handle and chose
“Close Magnifying Glass”**



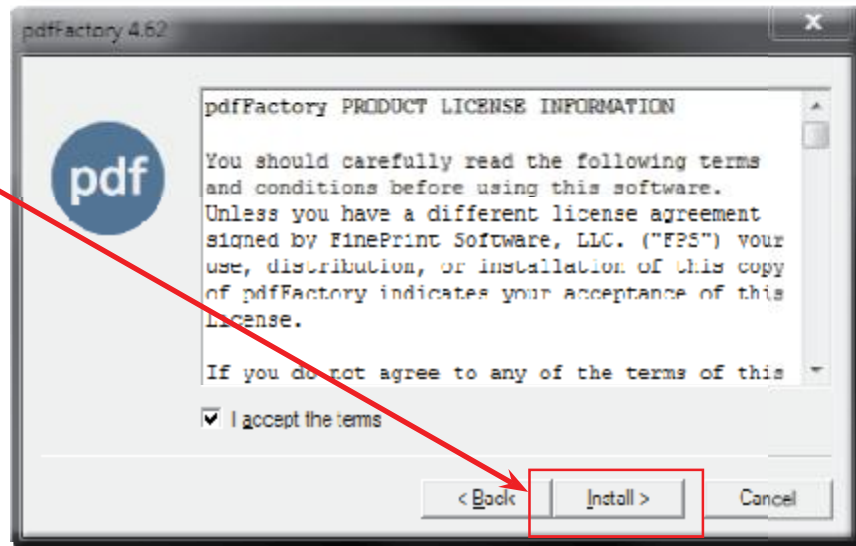
Installing pdf Factory
Click Setup



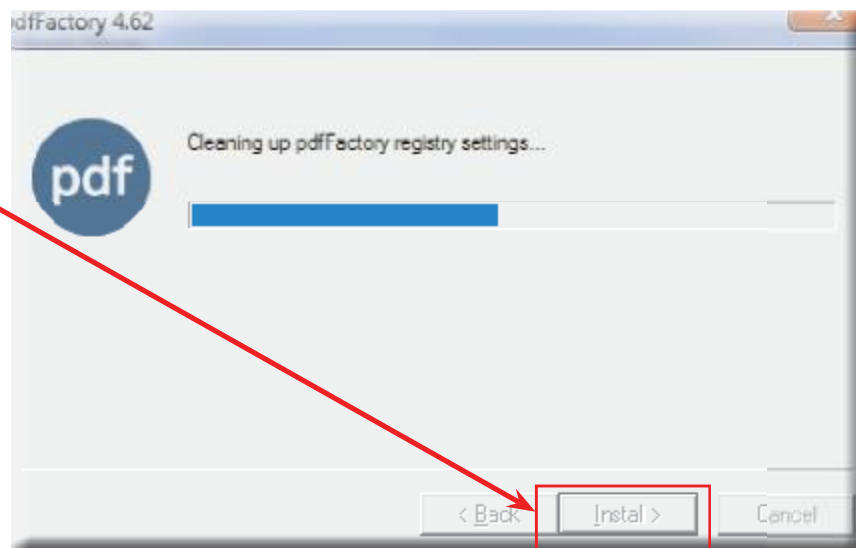
Click Next



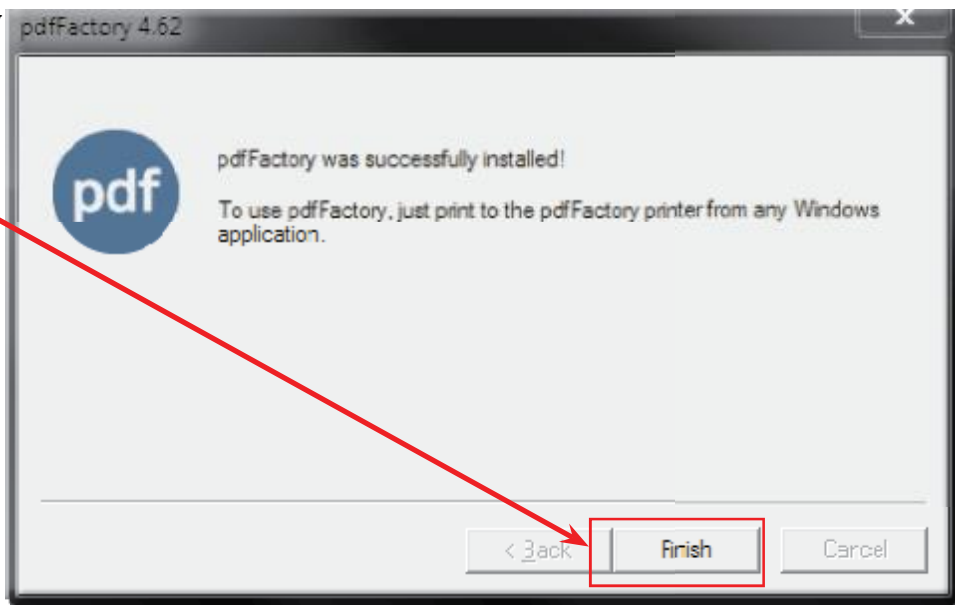
Check the
"I accept the terms" then click
Install



Click Install



pdfFactory was successfully installed!
Click Finish



Please enter your user name if needed.
Click OK



The Identify & Report Australia MAIN MENU opens

